

5

4

3

2

1

Material and Finish Codes

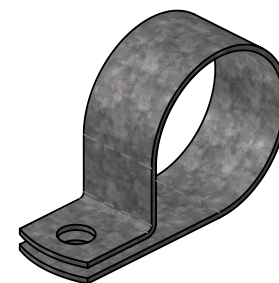
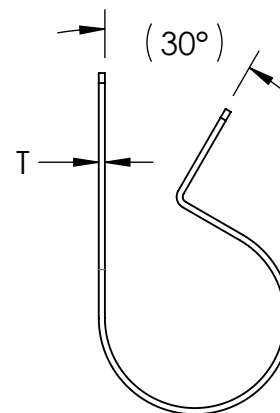
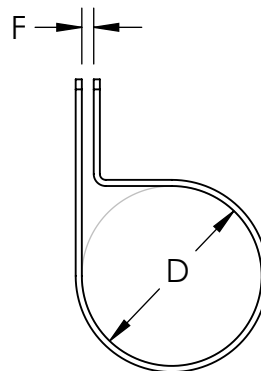
Z1 - CS, HD Galvanized, Chem Treated G90

Z2 - CS, .0003 min Zinc, Clear

REVISIONS

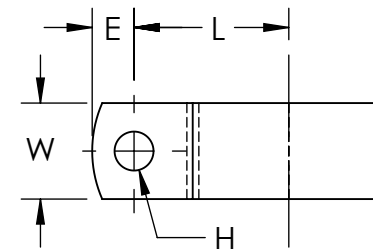
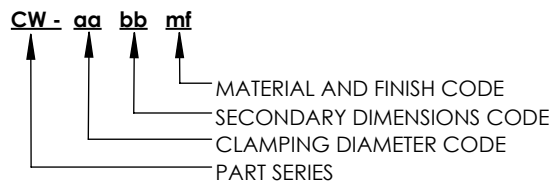
REV.	DESCRIPTION	DATE	APPROVED
1	Update Z2 Suffix to .0003 min.	11/17/2020	C. Goettl
2	Redrawn for Center to Center Dimension	6/23/2022	C. Goettl

Clamping Diameter (D)	Center to Center (L)
$\frac{aa}{16}$	$\frac{aa}{32} + \frac{H}{2} + .235$
± .015	± .031

As Supplied
(Open Position)

bb	Hole Diameter (H)	Hole Center to End (E)	Width (W)	Gap (F)	Material Thickness (T)
05	.172	.187	.375	.062	.032
07	.203	.218	.500		
	± .005	± .015	± .010	± .031	

Note: CW clamps have circular holes on the top and bottom sides with diameter H

**EXPLANATION OF PART CALLOUT****EXAMPLE OF PART CALLOUT****CW - 16 07 Z1**

This part number indicates the clamp will have dimensions:
 Clamping Diameter (D) = 1.000
 Hole Diameter (H) = .203
 Center to Center (L) = .781
 Width (W) = .500
 Hole Center To End (E) = .218

Made from CS, Hot Dipped Galvanized,
Chem Treated G90

THE ORIGINAL CLIP & CLAMP CO.
 1221 SOUTH PARK STREET
 PORT WASHINGTON, WI 53074
 (262) 377-5030

PROPRIETARY AND CONFIDENTIAL
 THE INFORMATION CONTAINED IN THIS DRAWING IS THE SOLE PROPERTY OF KICKHAEFER MANUFACTURING COMPANY. ANY REPRODUCTION IN PART OR AS A WHOLE WITHOUT THE WRITTEN PERMISSION OF KICKHAEFER MANUFACTURING COMPANY IS PROHIBITED.

PART SERIES
MASTER PRINT**CW**WIRING AND TUBE
CLAMPS

DRAWN CHECKED

BC KW

8/22/17 9/11/18

NOT TO SCALE REV 1

5

4

3

2

1

D

D

C

C

B

B

A

A